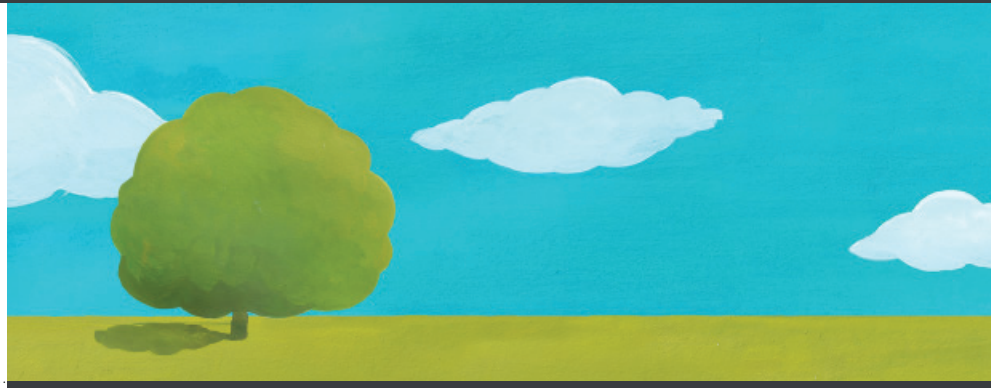


iFP

INDUSTRIAL FINISHING PLANTS



KP.HMA

VACUUM CLEANING MACHINES

Modified Alcohols . Hydrocarbons



ECO~POWER

THE BEST RESULTS FOR THE MOST DEMANDING APPLICATIONS

APPLICATIONS

Turned mechanical parts . Precision CNC turned parts . Pressed metal parts . Die-casting . Bent items
Hydraulic components . Valves . Fittings . Taps . Heat exchangers . Automotive . Sintered components
Gears . Cutlery . Pots and pans . Watches . Jewellery . Medical components

KP Kleen Power

THE CLEANING OF THE FUTURE... NOW

EN

VACUUM CLEANING MACHINES

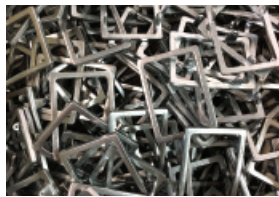
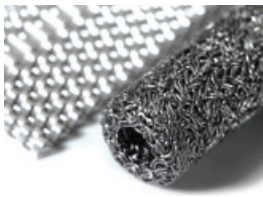
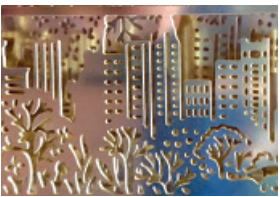
MODIFIED ALCOHOLS . HYDROCARBONS

The vacuum treatment

Thanks to its vacuum treatment cycle up to 1 millibar and its wide standard and optional ranges, the KP *Kleen Power* series systems are the best cleaning technology currently on the market. In the HMA version, the systems obtain optimum results in the most demanding applications as to required production volumes and contamination present.

WORKING COMPLETELY IN VACUUM CONDITIONS, ALL SYSTEMS ARE CHARACTERIZED BY:

- Continuous washing liquid filtration
- Continuous washing liquid distillation
- Continuous separation of the emulsion with automatic water discharge
- Total separation of oil from washing liquid, with continuous automatic discharge
- Operation data continuous detection
- Remote connection via internet
- Easy accessibility for maintenance purposes



INDUSTRIAL FINISHING PLANTS

STANDARD FEATURES

- Stainless steel construction
- Vacuum-proof systems
- High-pressure spraying pumps
- Vacuum pumps
- Cryogenic cooling system
- Sludge separation unit
- Washing liquid loading/unloading sealed system
- Washing liquid filtration
- Two washing liquid storage tanks
- Touch screen control panel
- Internet-based service

AVAILABLE ACCESSORIES

- Ultrasound transducers
- Third washing liquid tank
- Protection agent application unit
- Additional filtration units
- Automatic load handling systems
- Automatic load recognition systems
- Chlorinated washing liquid use



model	load dimensions	load weight Kg	dimensions mm	cicles/hour
KP 50 HMA	300 x 450 x 200h	50	1800 x 1800 x 2600h	4 - 8
KP 100 HMA	600 x 450 x 200h	100	1900 x 2100 x 2800h	4 - 8
KP 150 HMA	900 x 450 x 200h	150	2150 x 2400 x 3000h	4 - 8
KP 200 HMA	1200 x 450 x 200h	200	2500 x 2400 x 3000h	4 - 8

IFP Europe Srl

Via Po, 1
35015 Galliera Veneta (PD) Italia
Tel. +39 049.5996883
Fax +39 049.5996884
info@ifpsrl.com



#ifpeurope



www.ifpsrl.com